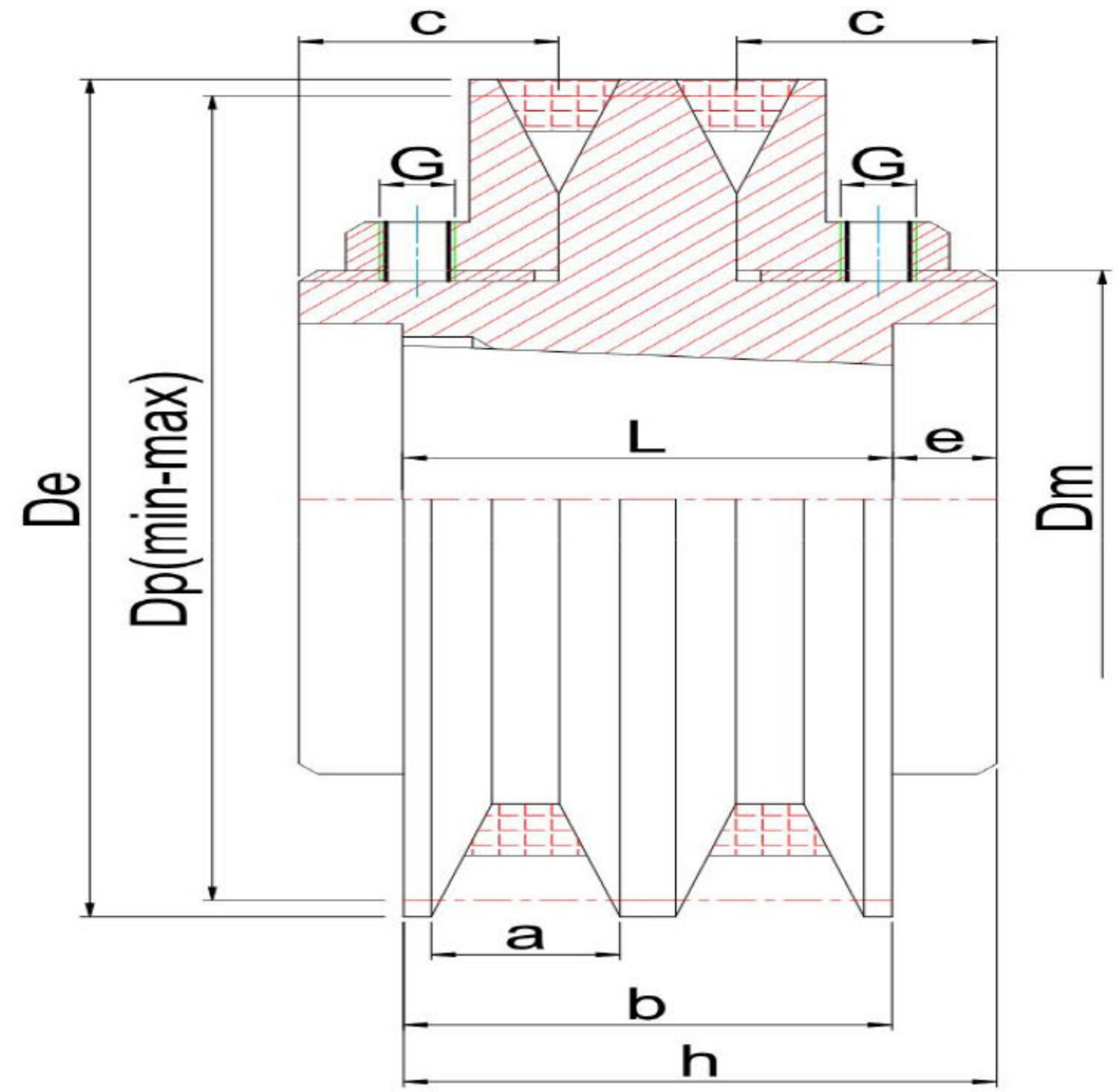
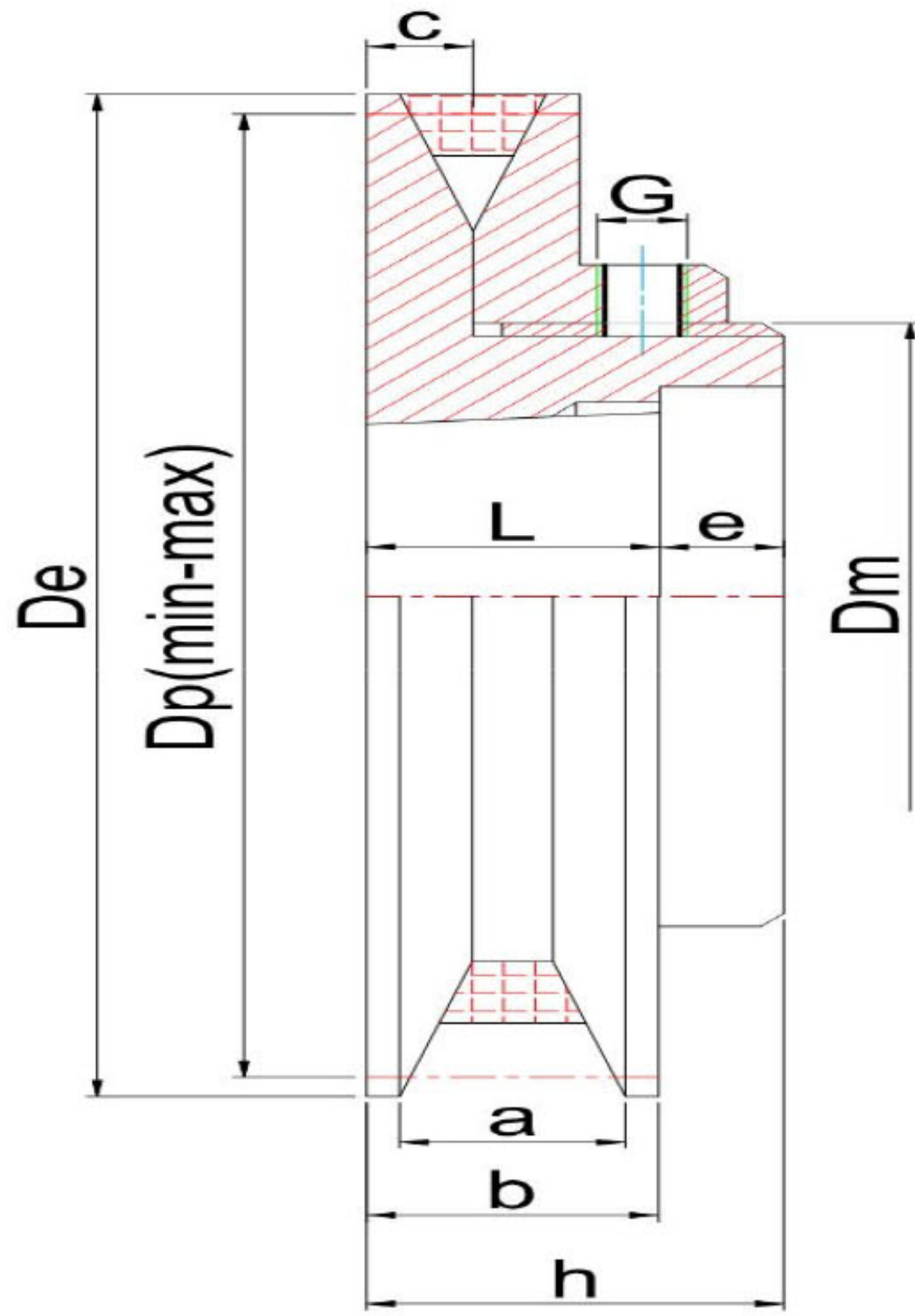


Adjustable Pulleys



SIZE	Bore of bush	De	Dm	Dp Min/Max	a Max/Min	b max	b min	c	e	G	h	L
84xZ1 1108	10-28mm	84	50	62 / 80	14.5 / 10	19.5	15	7.5	-	6	28	28
95XZ1 1108	10-28mm	95	60	73 / 91	14.5 / 10	20.5	16	8	8.0	6	30	22
100XZ1 1108	10-28mm	100	60	78 / 96	14.5 / 10	20.5	16	8	8.0	6	30	22
108XZ1 1210	11-30mm	108	72	90 / 104	13.2 / 10	19.2	16	8	10.0	8	35	25
108XA1 1210	11-30mm	108	62	76 / 102	19.5 / 13	25.5	19	9.5	12.0	8	39	27
120XA1 1210	11-30mm	120	72	88 / 114	19.5 / 13	26.5	20	10	10.0	8	36	26
120XA2 1215	11-30mm	120	72	88 / 114	19.5 / 13	47.1	34	26	12.0	8	66	40.5
129XA1 1210	11-30mm	129	72	97 / 123	19.5 / 13	26.5	20	10	10.0	8	36	26
129XA2 1215	11-30mm	129	72	97 / 123	19.5 / 13	47.1	34	26	12.0	8	66	40.5
139XA1 1610	14-40mm	139	85	109 / 133	18.9 / 13	25.9	20	10	11.0	8	37	26
139xA2 1615	14-40mm	139	85	109 / 133	18.9 / 13	46.8	35	27	14.5	8	69	38.5
146XA1 1610	14-40mm	146	85	116 / 140	18.9 / 13	25.9	20	10	11.0	8	37	26
146XA2 1615	14-40mm	146	85	116 / 140	18.9 / 13	46.8	35	27	14.5	8	69	38.5
156XA1 1610	14-40mm	156	85	126 / 150	18.9 / 13	25.9	20	10	11.0	8	37	26
156XA2 1615	14-40mm	156	85	126 / 150	18.9 / 13	46.8	35	27	14.5	8	69	38.5
164XA1 1610	14-40mm	164	85	134 / 158	18.9 / 13	25.9	20	10	8.0	8	37	29
164XA2 1615	14-40mm	164	85	134 / 158	18.9 / 13	46.8	35	27	15.5	8	69	37.5
177XA1 2012	18-50mm	177	110	149 / 171	18.2 / 13	25.2	20	10	8.0	8	40	32
177XA2 2012	18-50mm	177	110	149 / 171	18.2 / 13	45.5	35	37.5	24.0	8	90	37
187XA1 2012	18-50mm	187	110	159 / 181	18.2 / 13	25.2	20	10	8.0	8	40	32
187XA2 2012	18-50mm	187	110	159 / 181	18.2 / 13	45.5	35	37.5	24.0	8	90	37
178XB1 2012	18-50mm	178	110	139 / 171	25.1 / 17	28.1	20	10	8.0	8	40	32
178XB2 2012	18-50mm	178	110	139 / 171	25.1 / 17	45.5	35	37.5	24.0	8	90	37
187XB1 2012	18-50mm	187	110	148 / 180	25.1 / 17	28.1	20	10	8.0	8	40	32
187XB2 2012	18-50mm	187	110	148 / 180	25.1 / 17	45.5	35	37.5	24.0	8	90	37
200XB1 2012	18-50mm	200	110	161 / 193	25.1 / 17	32	24	12	12.5	8	45	32
200XB2 2012	18-50mm	200	110	161 / 193	25.1 / 17	64	44	35	29.0	8	90	32
232XB1 2012	18-50mm	232	110	193 / 225	25.1 / 17	32	24	12	12.5	8	45	32
232XB2 2012	18-50mm	232	110	193 / 225	25.1 / 17	64	44	35	29.0	8	90	32
250XB1 2517	20-60mm	250	130	211 / 243	25.1 / 17	32	24	12	0.0	8	45	45
250XB2 2517	20-60mm	250	130	211 / 243	25.1 / 17	64	44	35	22.5	8	90	45