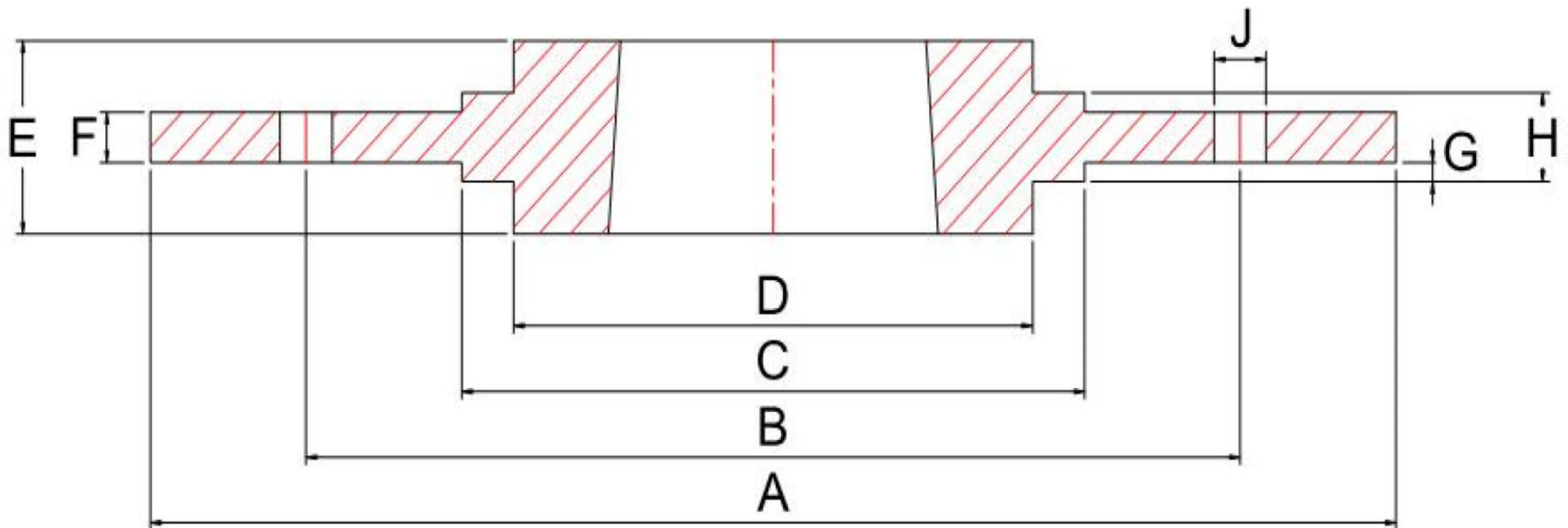


Taper bored bolt on hubs



Large type SM hubs

Hub Size	Bushes bore	A	B	C(h9)	D	E	F	G	H	Screw hole J XN
SM-12 1210	11-32mm	180	135	90	75	25	6.5	2.5	11.5	φ7.5 X 6
SM-16 1615	14-42mm	200	150	110	85	38	7.5	2.5	12.5	φ7.5 X 6
SM-20 2012	14-50mm	270	190	140	110	32	8.5	2.5	13.5	φ9.5 X 6
SM-25 2517	16-60mm	340	240	170	125	45	9.5	2.5	14.5	φ11.5 X 8
SM-30-1 3020	25-75mm	430	300	220	160	51	13.5	2.5	18.5	φ13.5 X 8
SM-30-2 3020	25-75mm	485	340	250	160	51	13.5	2.5	18.5	φ13.5 X 8

Small type SM hubs

Hub Size	Bushes bore	A	B	C(h9)	D	E	F	G	H	Screw hole
BF-12 1210	11-32mm	120	100	80	75	25	6.5	2.5	11.5	φ7.5 X 6
BF-16 1610	14-42mm	130	110	90	85	25	7.5	2.5	12.5	φ7.5 X 6
BF-20 2012	14-50mm	145	125	115	110	32	8.5	2.5	13.5	φ9.5 X 6
BF-25 2517	16-60mm	185	155	130	125	45	9.5	2.5	14.5	φ11.5 X 6
BF-30 3020	25-75mm	220	190	160	160	51	13.5	2.5	18.5	φ13.5 X 6