



SHAOXING MERIC
TRANSMISSION CO.,LTD.

COUPLINGS & MOTOR BASES

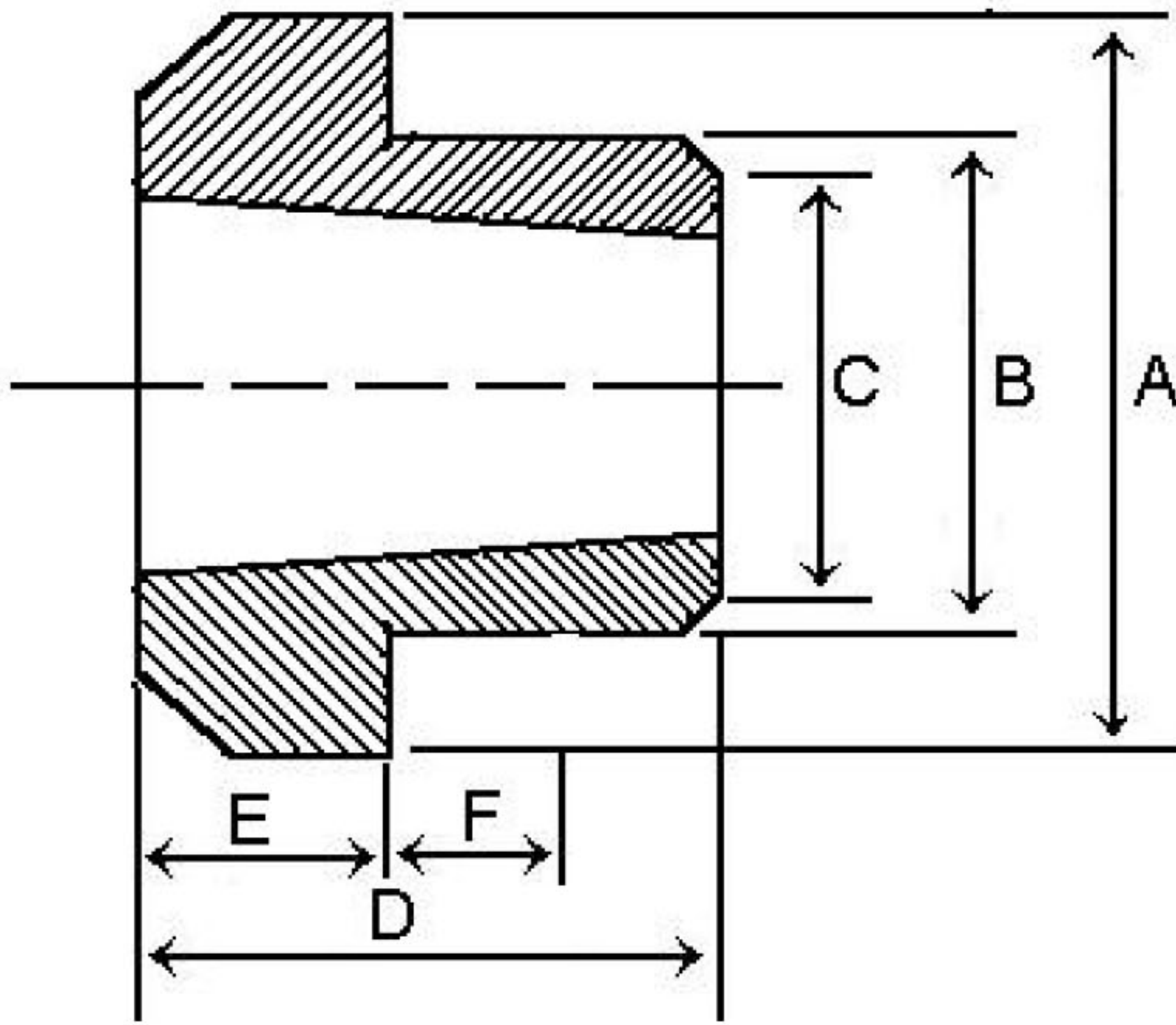


绍兴美瑞克传动件有限公司

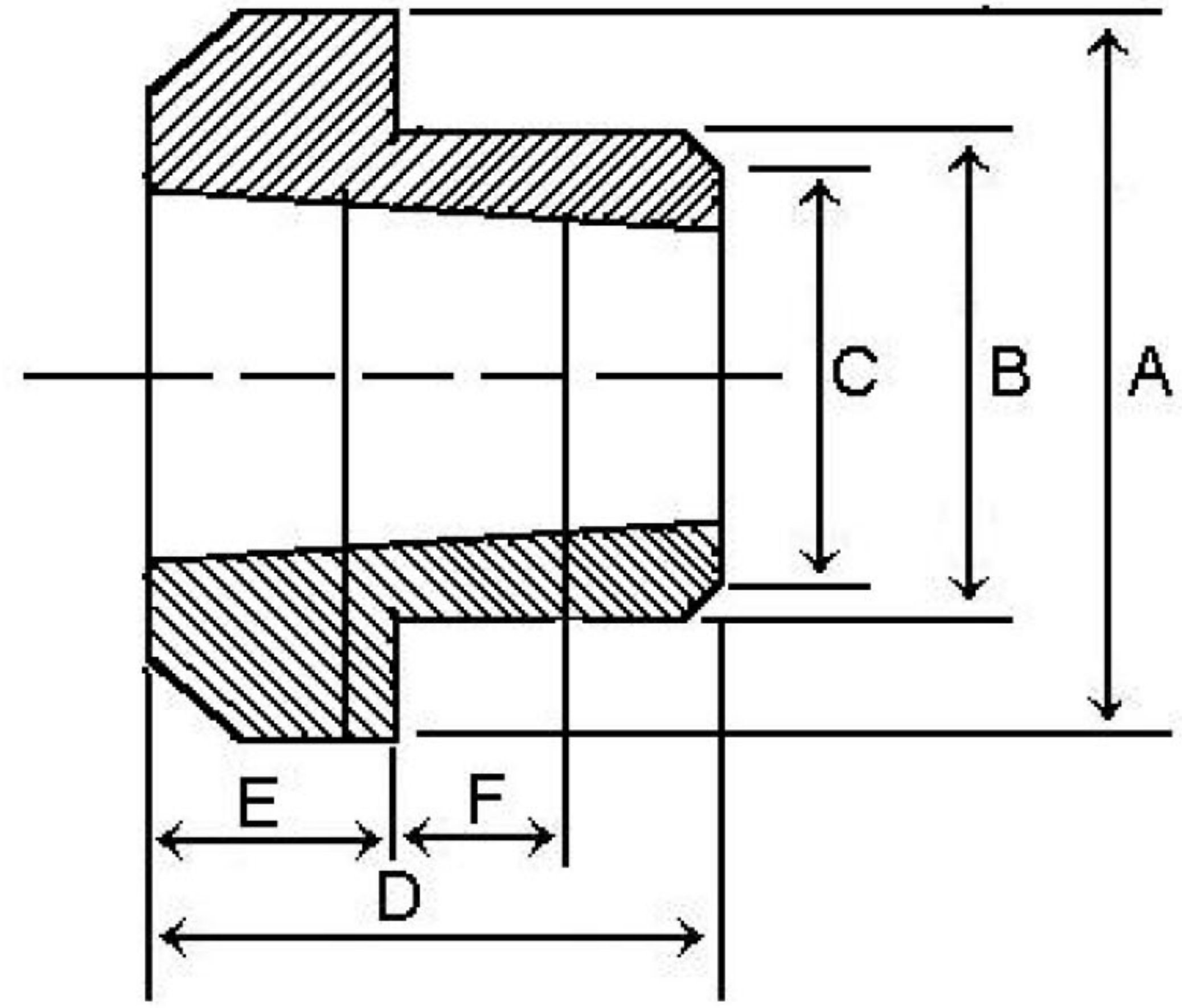




Taper bored weld on hubs



W Weld on hubs



WH Weld on hubs

W type taper bore Weld-on hubs

Hub Size	A	B	C	D	E	F
W12 1215	73.03	63.50	62.71	38.10	15.88	9.53
W16 1615	82.55	73.03	72.74	38.10	15.88	9.53
W20 2017	101.60	88.90	88.11	44.45	19.05	14.45
W25 2517	127.00	111.13	110.34	44.45	19.05	14.45
W30 3030	149.86	133.35	132.56	76.20	25.40	19.05
W35 3535	184.15	158.75	157.96	88.90	31.75	25.40
W40 4040	225.43	196.85	196.06	101.60	31.75	31.75
W45 4545	254.00	222.25	221.46	114.30	38.10	38.10

WH type taper bore Weld-on hubs

Hub Size	A	B	C	D	E	F
WH12 1210	70	65	64.5	25	9	10
WH16-1 1610	80	75	74.5	25	9	10
WH20 2012	95	90	89.5	32	12	12
WH25 2517	115	110	109.5	44	19	15
WH30-2 3020	145	140	139.5	50	20	15
WH35 3525	190	180	179.5	65	25	25
WH40 4040	200	190	189.5	101	32	30
WH45 4545	210	200	199.5	114	40	30
WH50 5050	230	220	219.5	127	40	45