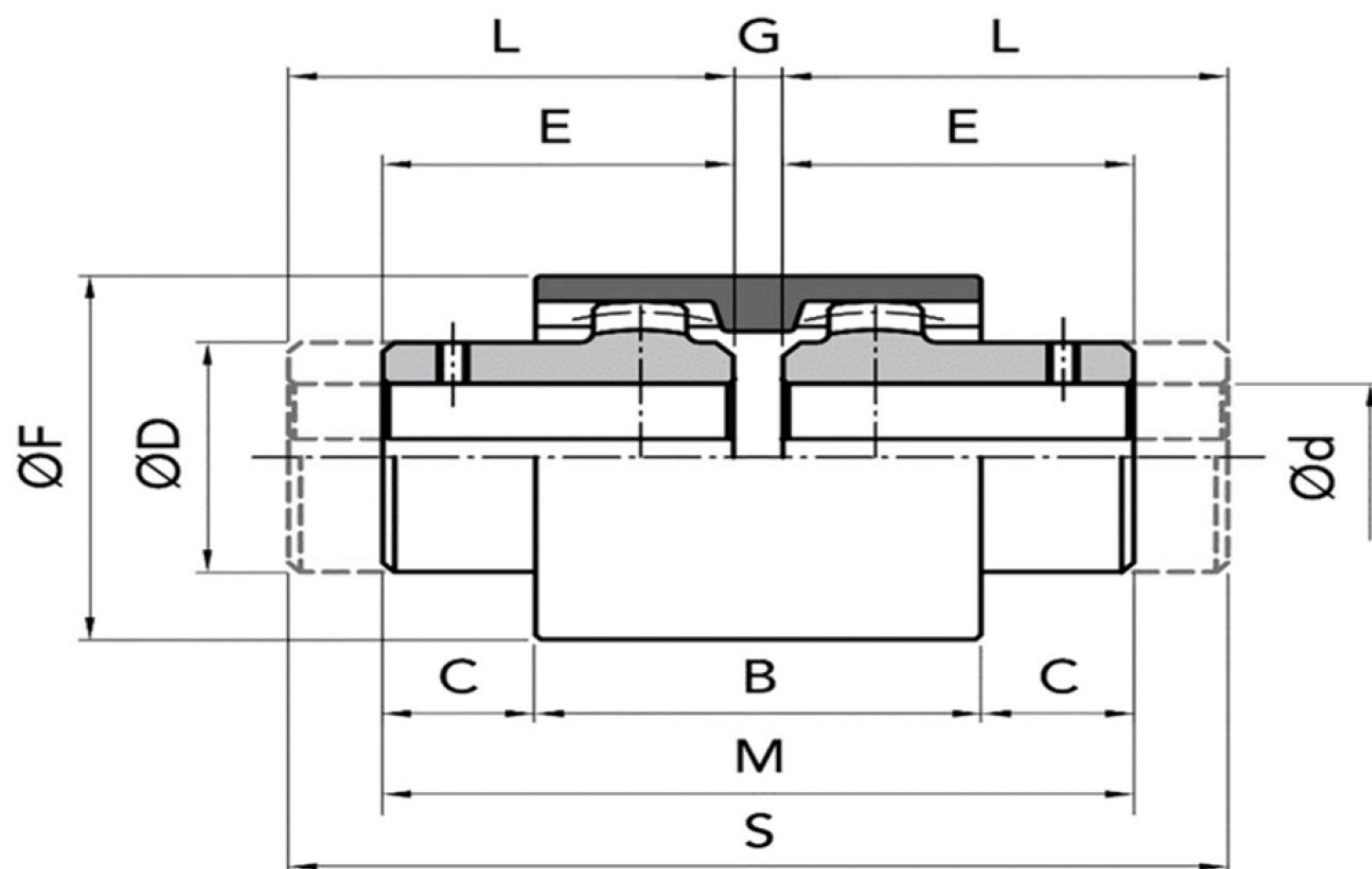




Nylon crown gear couplings



SIZE	Bore size		Tooth profile		Dimensions									Weight (kg)		
	min	max	Module	Z	B	C	D	E	F	G	M	L	S	Standard hub	Long hub	Nylon
GF14	6	14	1.5	20	37	6.5	25	23	40	4	50	40	84	0.10	0.13	0.022
GF19	8	19	1.5	24	37	8.5	32	25	48	4	54	40	84	0.18	0.28	0.028
GF24	10	24	1.5	28	41	7.5	36	26	52	4	56	50	104	0.23	0.42	0.037
GF28	10	28	1.5	34	46	19	45	40	68	4	84	55	114	0.54	0.79	0.086
GF32	12	32	1.5	40	48	18	50	40	76	4	84	55	114	0.66	0.97	0.104
GF38	14	38	1.5	44	48	18	58	40	83	4	84	60	124	0.93	1.83	0.131
GF42	20	42	1.5	50	50	19	63	42	92	4	88	60	124	1.10	2.76	0.187
GF48	20	48	1.5	50	50	27	68	50	95	4	104	60	124	1.50	3.21	0.197
GF55	25	55	2	45	58	25	82	52	114	4	108	65	134	2.63	5.12	0.357
GF65	25	65	2.5	42	68	23	95	55	132	4	114	70	144	4.02	7.90	0.595

SIZE	Power factor RPM		Torque		Transmitted power in KW to RPM								Max. RPM	KG/CM ²	Weight	Max misalignment per hub		Aixal misalignment
	750	1000	1500	3000	750	1000	1500	3000	± 2°	0,7								
GF14	0.0011	0.0023	11.5	23	0.8	1,5	1,1	2,0	1.6	3,0	3,3	6,0	14000	0.27	0.17	± 2°	0,7	±1
GF19	0.0019	0.0037	18.5	36.5	1.3	2,7	1,8	3,7	2.7	5,5	5,4	11,1	12000	0.64	0.28	± 2°	0,8	±1
GF24	0.0023	0.0047	23	46	1.7	3,5	2,3	4,7	3.4	7,0	6,9	14,1	10000	0.92	0.31	± 2°	0,8	±1
GF28	0.0053	0.0106	51.5	103.5	3.9	7,9	5,2	10,6	7.8	16	15,6	32	8000	3.45	0.78	± 2°	1,0	±1
GF32	0.0071	0.0142	69	138	5.2	10,5	7,0	14,1	11	21	21,0	42	7100	5.03	0.92	± 2°	1,0	±1
GF38	0.009	0.0181	88	176	6.7	13,5	9,0	18,0	14	27	27,0	54	6300	9.59	1.28	± 2°	0,9	±1
GF42	0.0113	0.0226	110	220	8.4	16,8	11,2	22,5	17	34	33,6	68	6000	13.06	1.47	± 2°	0,9	±1
GF48	0.0158	0.0317	154	308	12	23,6	15,8	31,6	24	47	47,4	95	5600	18.15	1.78	± 2°	0,9	±1
GF55	0.029	0.058	285	570	22	43,5	29,0	58,0	44	87	87,0	174	4800	49.44	3.38	± 2°	1,2	±1
GF65	0.0432	0.0865	420	840	32	64,3	42,9	85,8	64	129	128,7	257	4000	106.34	4.99	± 2°	1,3	±1